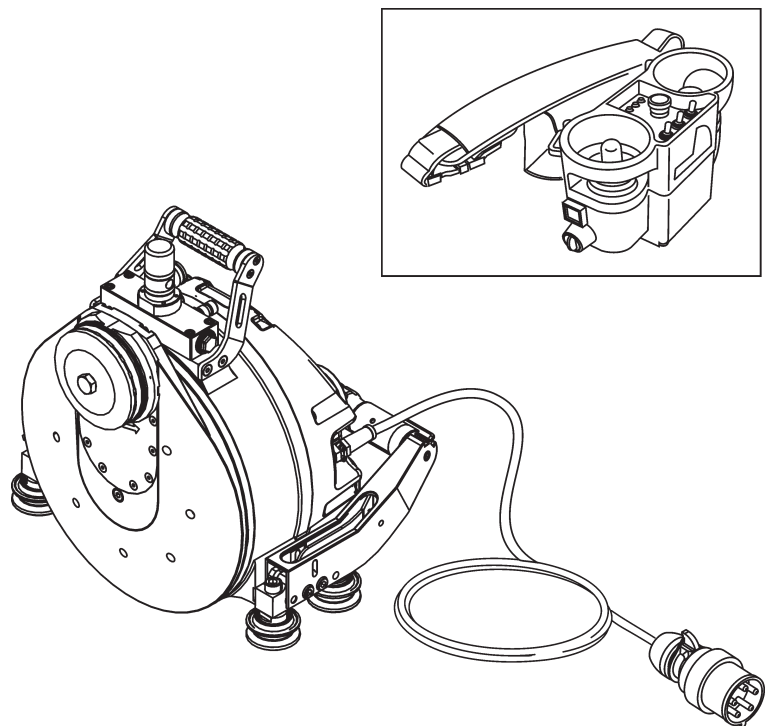


Ersatzteilliste

Spare Parts List / Liste des pièces détachées / Lista delle parti di ricambio

WSE811 ★ ★ ★

Index 000



Verwendung der Ersatzteilliste

Die Ersatzteilliste ist keine Montage- oder Demontageanleitung. Diese Ersatzteilliste dient ausschliesslich zum einfachen und schnellen Finden von Ersatzteilen, die bei der untenstehenden Adresse bestellt werden können.

Sicherheitsvorschrift



Gefahr

Montieren oder demontieren von Baugruppen kann Risiken bergen, auf die in dieser Ersatzteilliste nicht hingewiesen wird.

Das Verwenden dieser Ersatzteilliste für Montage- oder Demontagezwecke ist strikte verboten. Für Montage- und Demontearbeiten sind ausschliesslich die entsprechenden Beschreibungen in der Betriebsanleitung zu befolgen.

Nichtbeachten dieser Vorschrift kann zu Verletzungen führen, die im schlimmsten Fall auch den Tod zur Folge haben könnten.

Bestellungen



Information

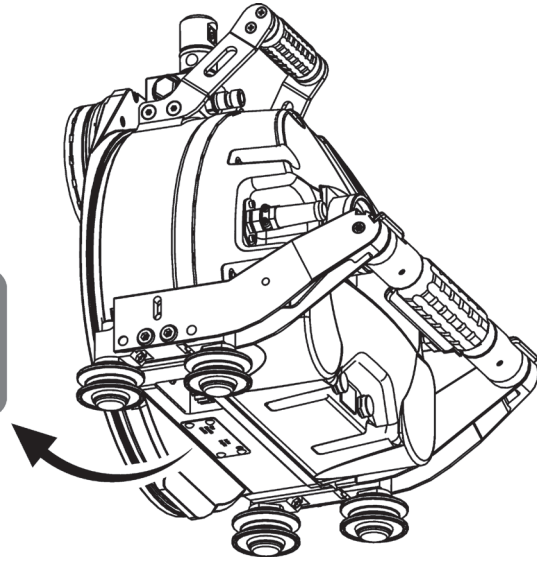
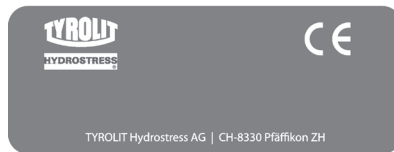
Um Falschliefereien zu vermeiden sollten vor der Versendung die Angaben in der Bestellung auf Richtigkeit und Vollständigkeit (siehe unter Bestellangaben) überprüft werden. Es ist auch darauf zu achten, dass die Lieferadresse vollständig angegeben ist.

Bestelladresse

TYROLIT Hydrostress AG
Witzbergstrasse 18
CH-8330 Pfäffikon
Switzerland
Telefon +41 (0) 44 / 952 18 18
Telefax +41 (0) 44 / 952 18 00
e-mail: info@tyrolit.com
www.tyrolit.com

Ersatzteilliste

Bestellangaben



Bei Bestellungen von Ersatzteilen benötigen wir folgende Angaben:

- Maschinentyp gemäss Typenschild (z.B. WSE811 ★★★)
- Maschinennummer gemäss Typenschild (z.B. 10994000)
- Maschinenindex gemäss Typenschild (z.B. 000)
- Ersatzteilnummer gemäss Ersatzteilliste (z.B. 961901)

Für Bestellungen, Fragen und Informationen wenden Sie sich bitte an die zuständige Niederlassung.

How to use the spare parts list

The spare parts list is not intended as instructions for assembly or dismantling work. It is exclusively intended to help you to quickly and easily find spare parts, which can then be ordered at the address below.

Safety regulations



Danger

The assembling or dismantling of modules can involve risks which are not identified in this spare parts list.
The use of this spare parts list for assembly or dismantling purposes is strictly forbidden. For assembly or dismantling tasks it is essential to only follow the corresponding descriptions in the operating manual.
If this regulation is not heeded injuries may be incurred which in the worst case can also be fatal.

Ordering



Information

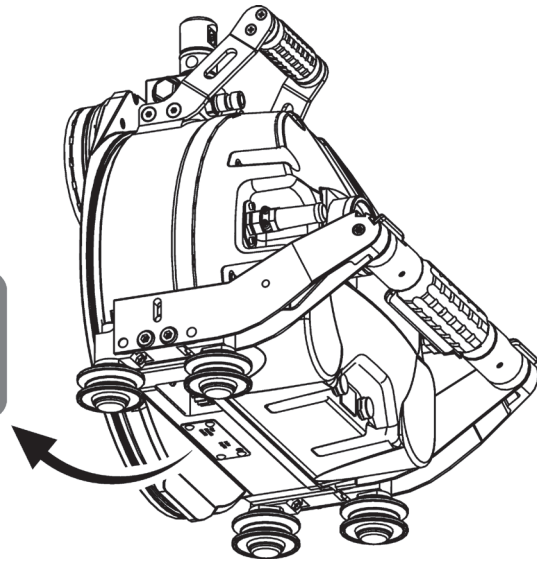
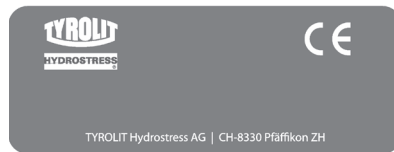
To avoid incorrect deliveries you should check the order details for correctness and completeness (see under ordering details) prior shipment.
You should ensure that the delivery address is given in full.

Order address

TYROLIT Hydrostress AG
Witzbergstrasse 18
CH-8330 Pfäffikon
Switzerland
Tel. +41 (0) 44 / 952 18 18
Fax +41 (0) 44 / 952 18 00
e-mail: info@tyrolit.com
www.tyrolit.com

Spare Parts List

Ordering details



When spare parts are ordered we need the following details:

- Machine type according to nameplate (e.g. WSE811 ★★★)
- Machine number according to nameplate (e.g. 10994000)
- Machine index according to nameplate (e.g. 000)
- Spare part number according to the spare parts list (e.g. 961901)

For orders, questions and information please contact your responsible branch office.

Utilisation de la liste des pièces détachées

La liste des pièces détachées n'est pas une instruction de montage ou de démontage. Cette liste sert exclusivement à trouver simplement et rapidement les pièces détachées, qui peuvent être commandées à l'adresse mentionnée ci-dessous.

Prescription de sécurité



Danger

Le montage ou le démontage des modules peut présenter des risques dont il n'est pas fait mention dans cette liste des pièces détachées.
Il est strictement interdit d'employer cette liste des pièces détachées à des fins de montage ou de démontage. Pour les opérations de montage et de démontage, il faut exclusivement suivre les descriptions correspondantes dans le mode d'emploi.
Le non-respect de la présente prescription peut conduire à des blessures, pouvant même entraîner la mort.

Commandes



Information

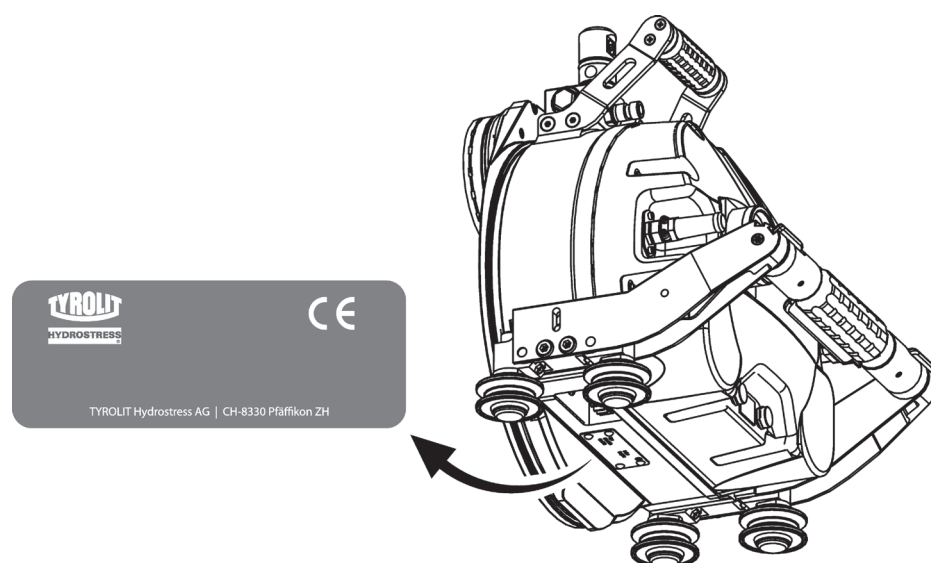
Pour éviter des livraisons inappropriées, il est conseillé de vérifier avant l'expédition l'exactitude et l'exhaustivité des indications fournies dans la commande (voir Données de commande).
Il faut aussi veiller à bien indiquer l'adresse de livraison en entier.

Adresse de commande

TYROLIT Hydrostress AG
Witzbergstrasse 18
CH-8330 Pfäffikon
Suisse
Téléphone +41 (0) 44 / 952 18 18
Télécopie +41 (0) 44 / 952 18 00
e-mail: info@tyrolit.com
www.tyrolit.com

Liste des pièces détachées

Données de commande



Lors de la commande de pièces détachées, nous avons besoin des données suivantes :

- Type de machine selon la plaque signalétique (p.ex. WSE811 ★★★)
- Numéro de machine selon la plaque signalétique (p.ex. 10994000)
- Indice de machine selon la plaque signalétique (p.ex. 000)
- Numéro de pièce détachée selon la liste des pièces détachées (p.ex. 961901)

Pour les commandes, questions et informations, vous êtes prié de vous adresser à la filiale compétente.

Uso della lista delle parti di ricambio

La lista delle parti di ricambio non è un manuale d'istruzioni per montaggio o smontaggio. Questa lista delle parti di ricambio serve esclusivamente per trovare in modo semplice e rapido parti di ricambio che possono essere ordinate all'indirizzo riportato qui sotto.

Norme di sicurezza



Pericolo

Il montaggio o lo smontaggio di componenti della macchina può comportare pericoli che non sono indicati in questa lista delle parti di ricambio. E' assolutamente vietato servirsi di questa lista delle parti di ricambio per scopo di montaggio o di smontaggio. Per operazioni di montaggio o smontaggio occorre seguire esclusivamente le relative istruzioni nel manuale per l'uso della macchina. La mancata osservanza di queste norme può comportare lesioni, e nel caso peggiore anche la morte.

Ordinazioni



Information

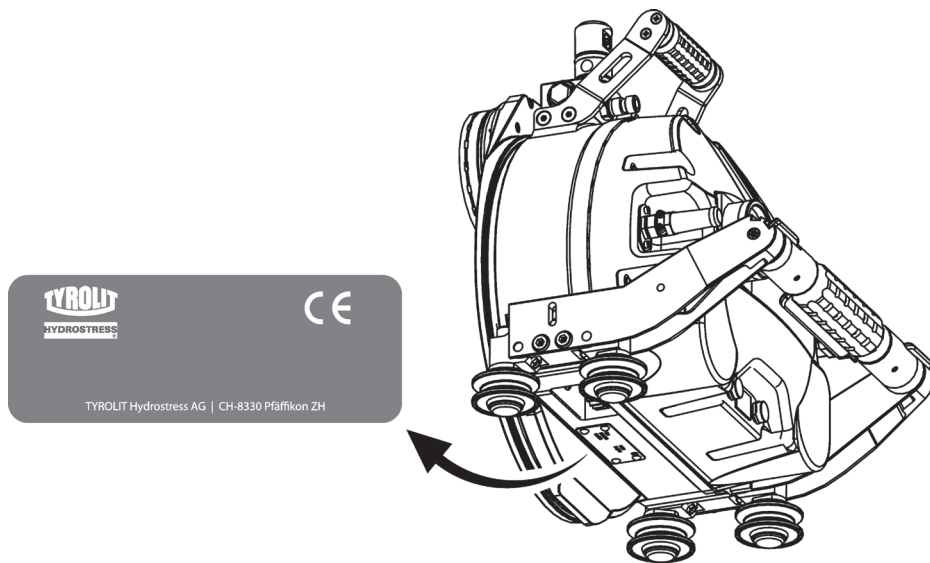
Per evitare forniture incorrette, occorre verificare prima dell'invio dell'ordinazione se i dati indicati in essa sono corretti e completi (vedere la lista dei dati per l'ordinazione). Occorre verificare anche se l'indirizzo per la consegna è esatto e completo..

Indirizzo per ordinazioni

TYROLIT Hydrostress AG
Witzbergstrasse 18
CH-8330 Pfäffikon
Svizzera
Tel. +41 (0) 44 / 952 18 18
Fax +41 (0) 44 / 952 18 00
e-mail: info@tyrolit.com
www.tyrolit.com

Lista delle parti di ricambio

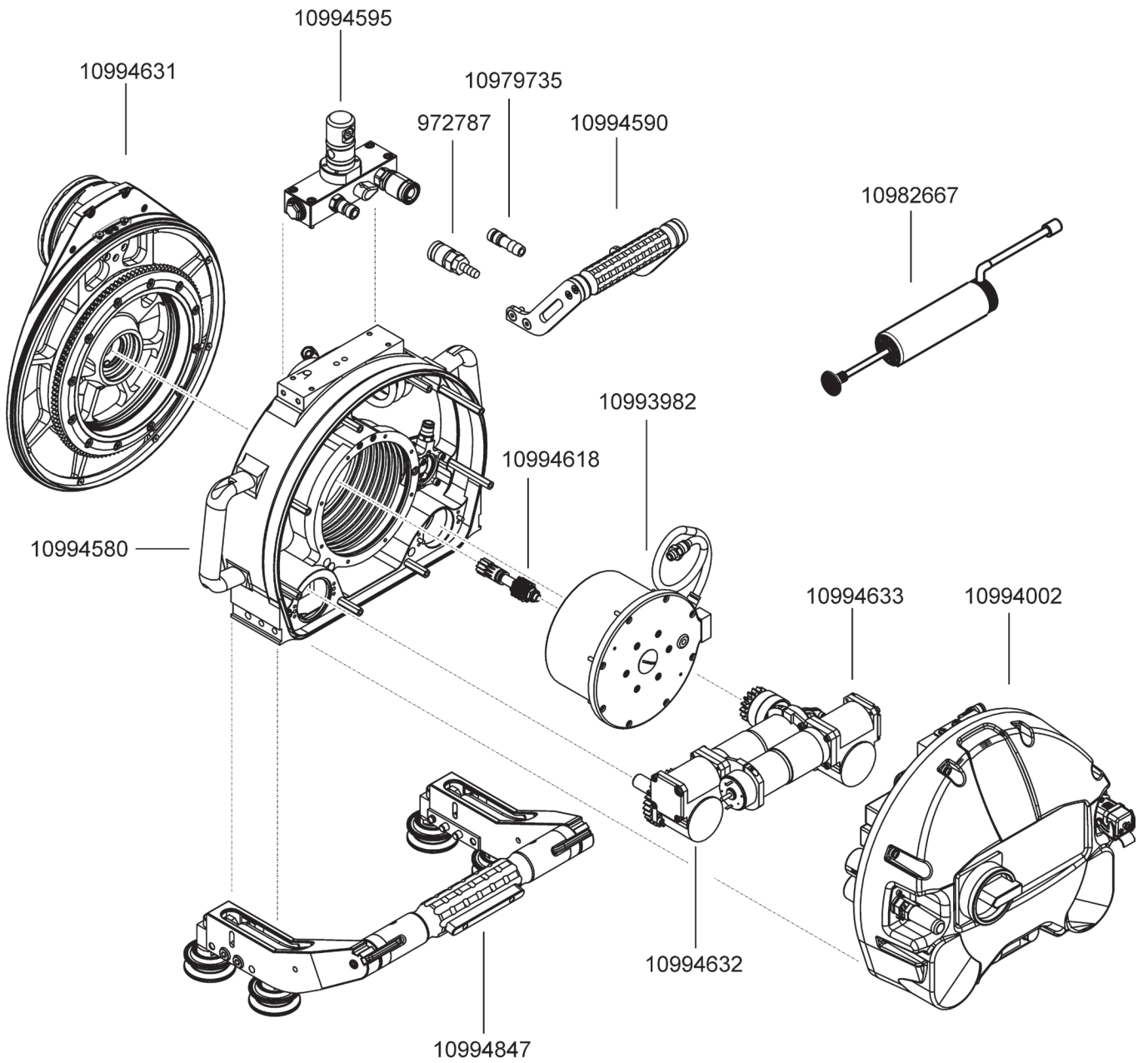
Dati per l'ordinazione



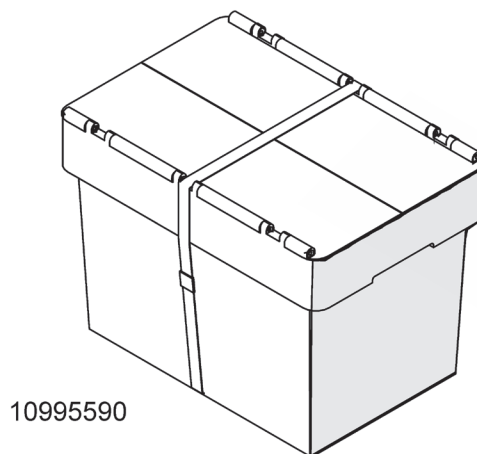
Per ordinazioni di parti di ricambio ci occorrono i dati seguenti:

- Tipo di macchina indicato sulla targhetta della macchina (per es. WSE811 ★★★)
- Numero della macchina indicato sulla targhetta della macchina (per es. 10994000)
- Indice della macchina indicato sulla targhetta della macchina (per es. 000)
- Numero della parte di ricambio secondo la lista di parti di ricambio (per es. 961901)

Per ordinazioni, domande o richieste d'informazioni Vi preghiamo di rivolgerVi all'agenzia competente.



10992642



10995086

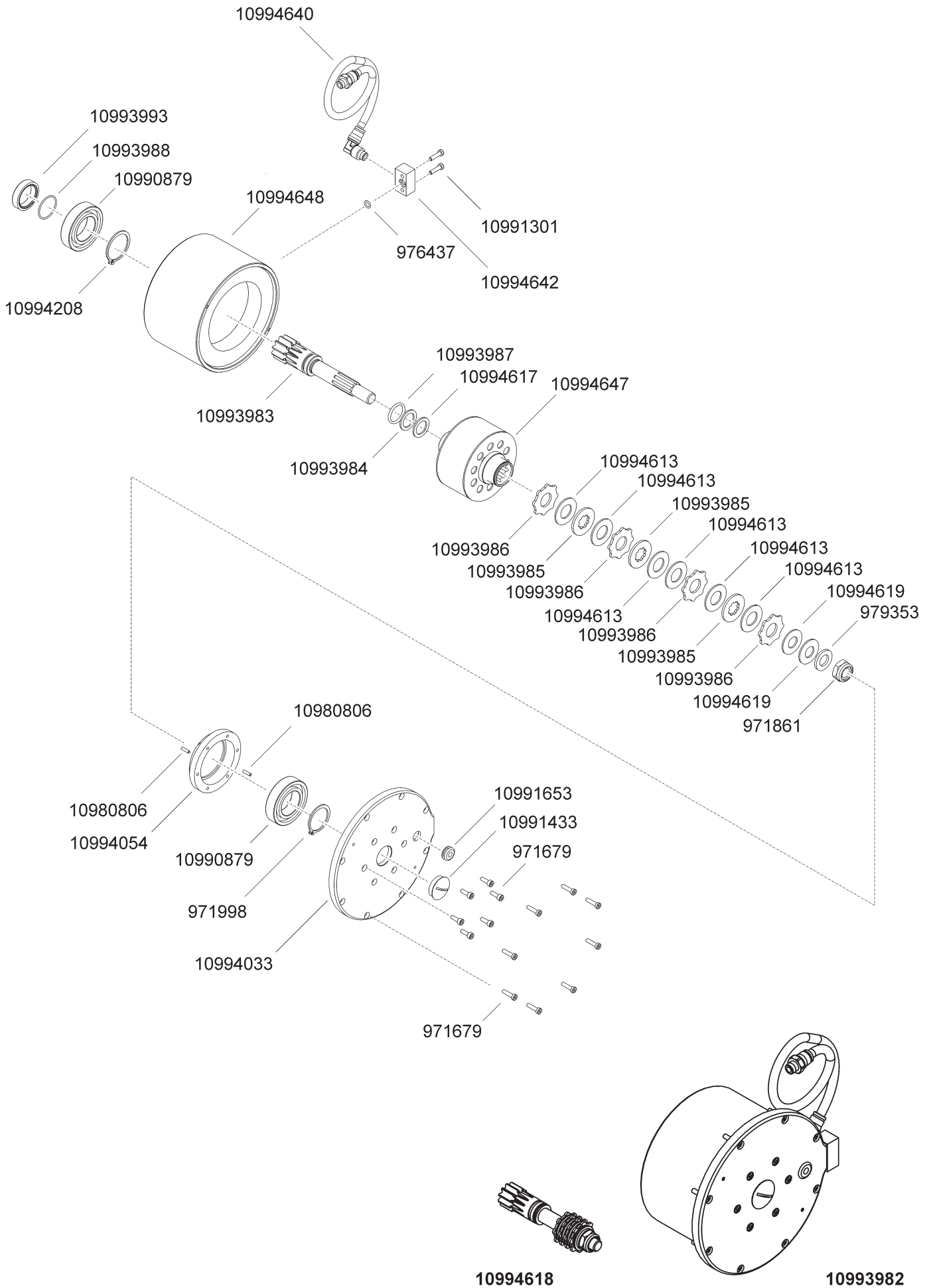


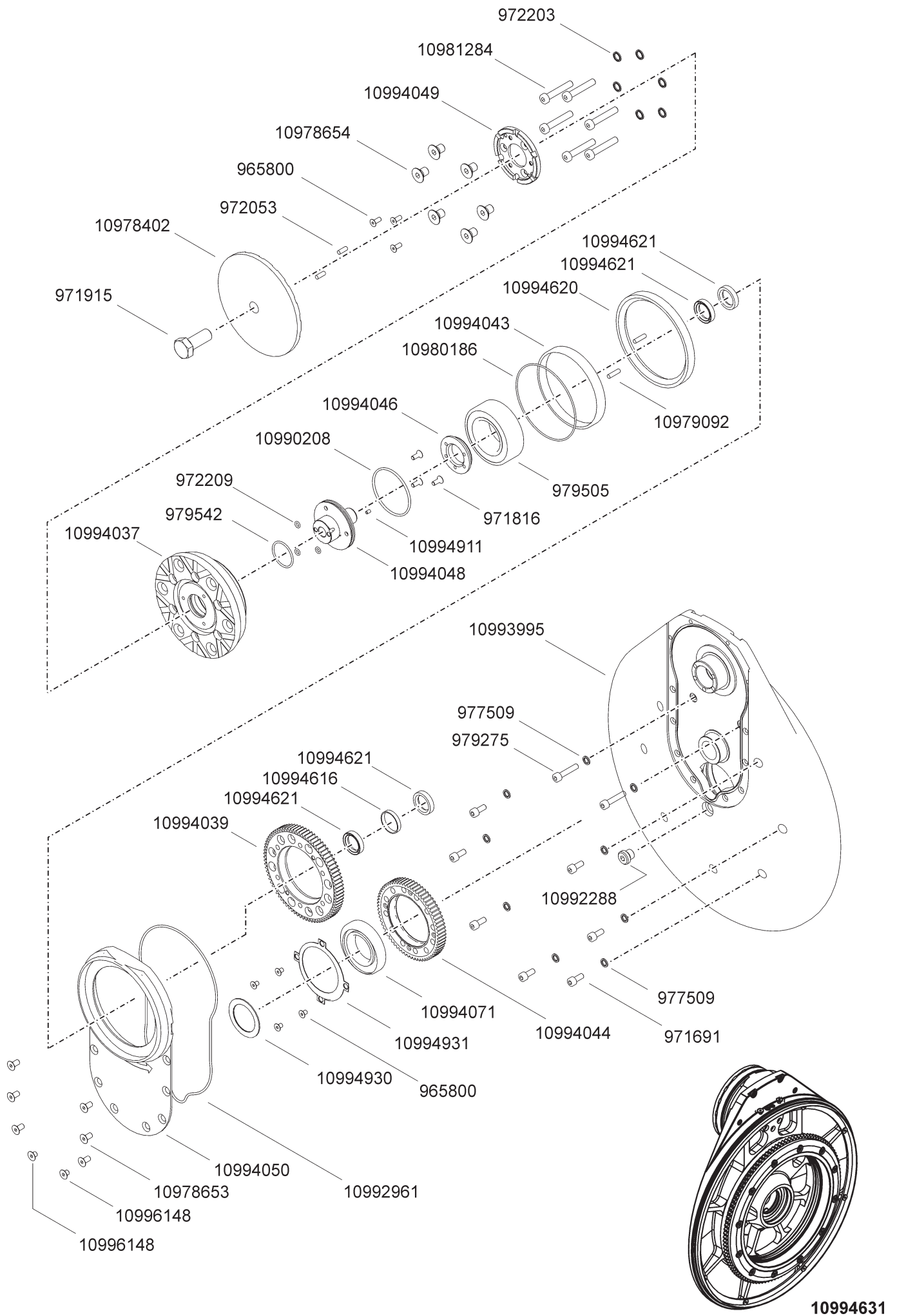
SW 22

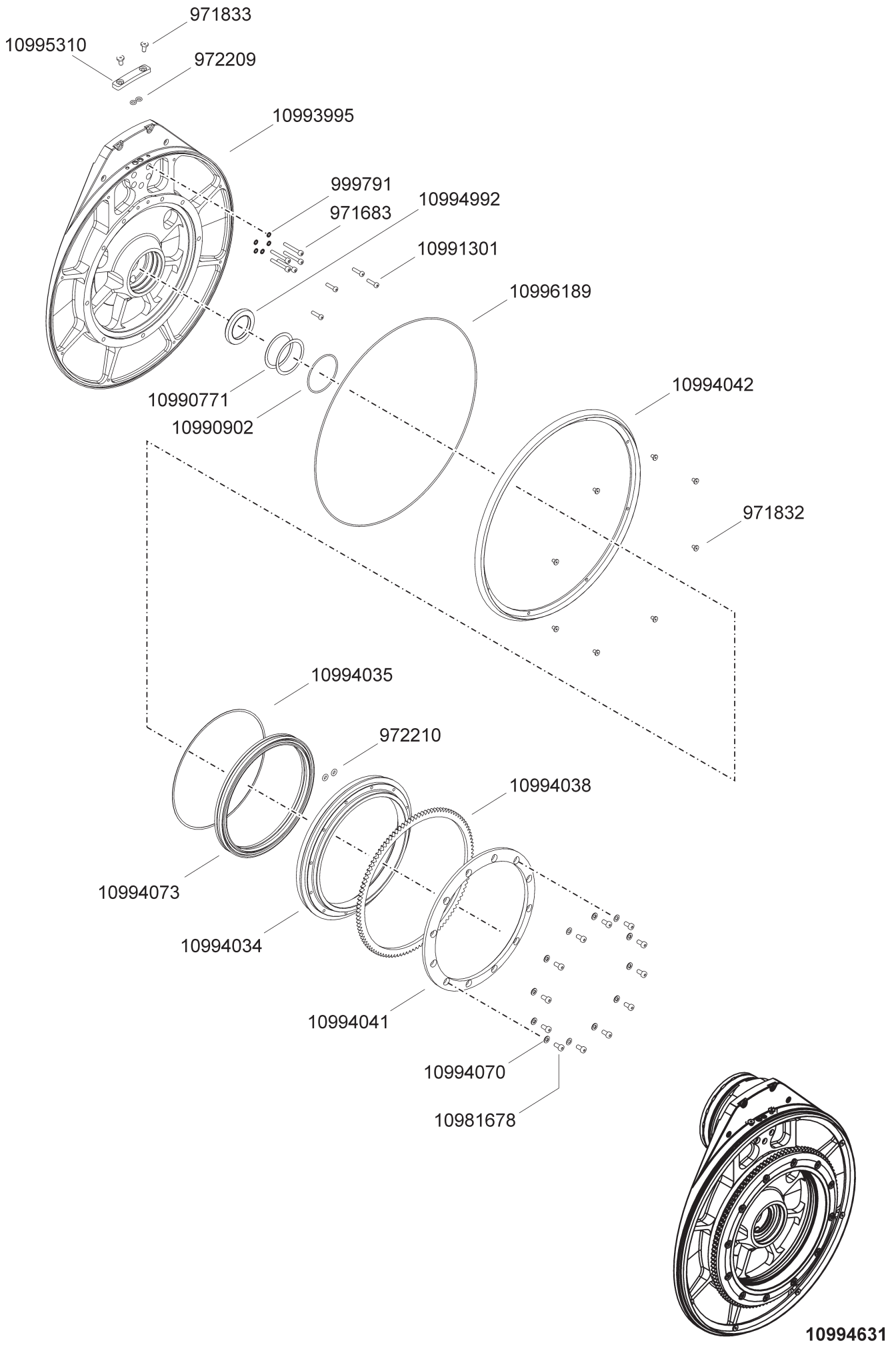
973784

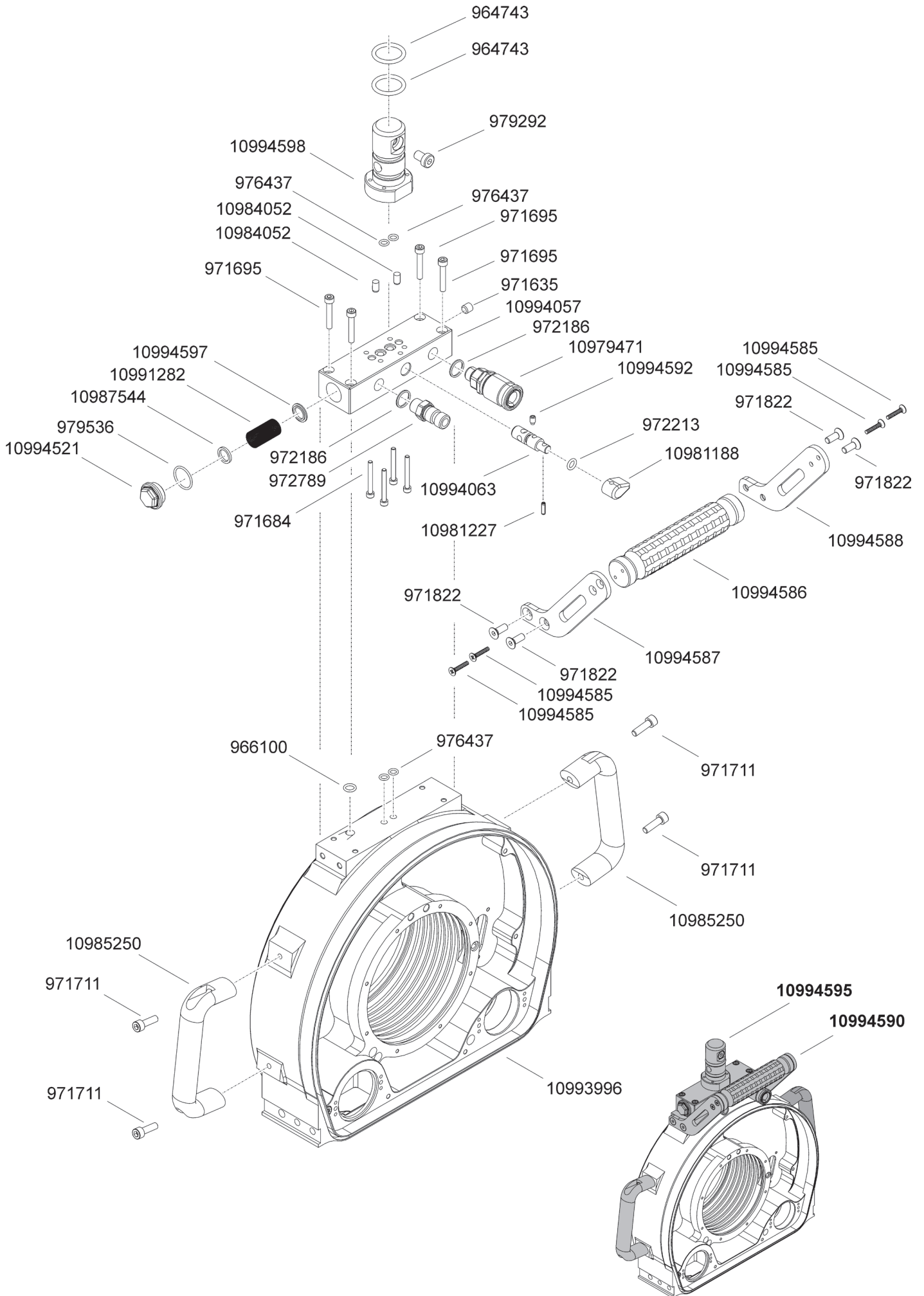


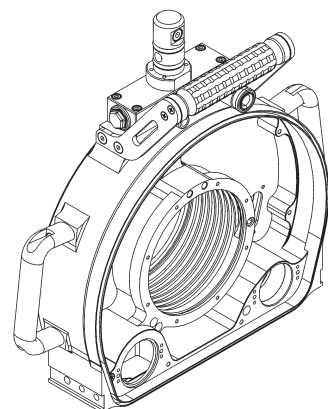
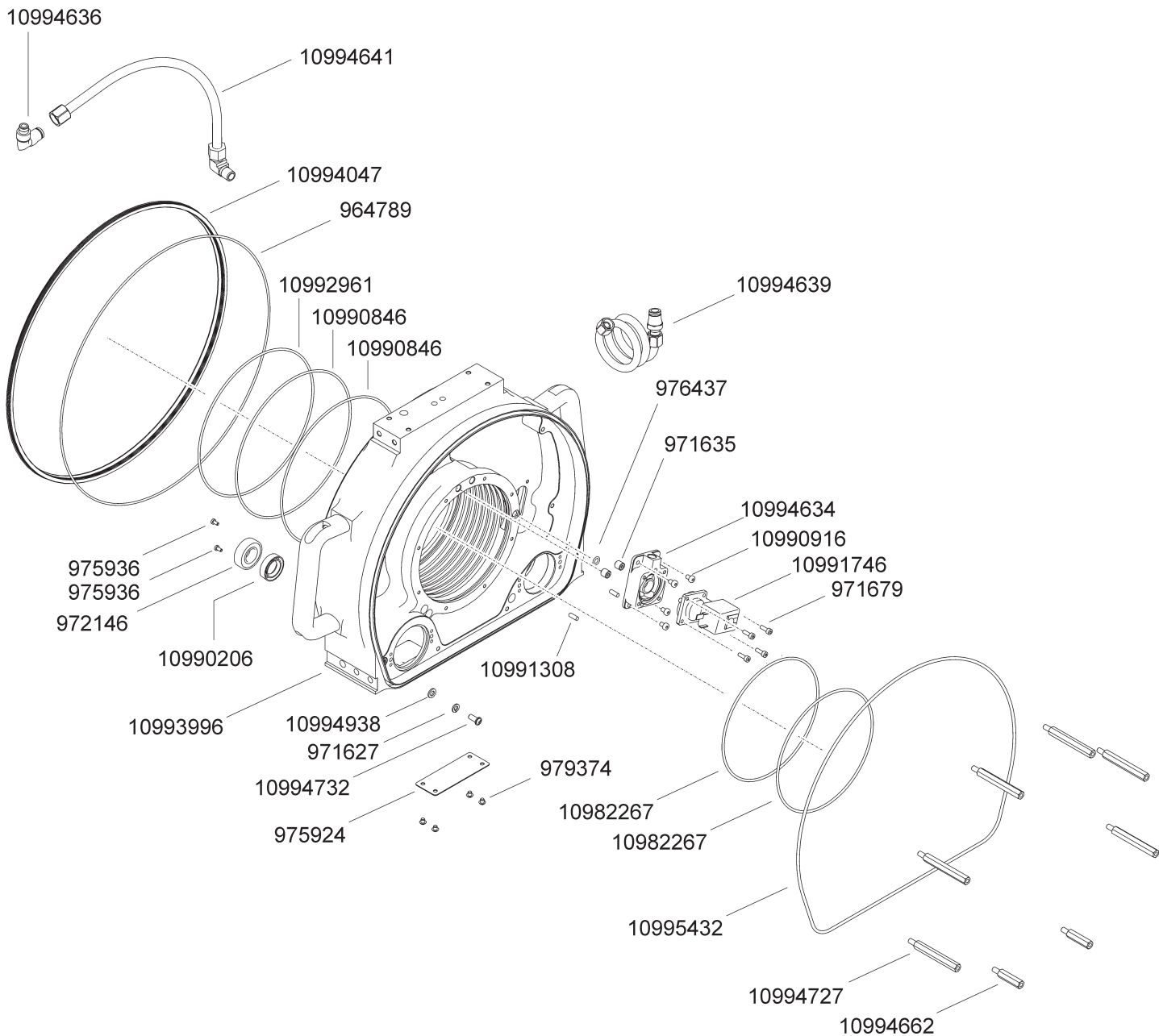
SW 19

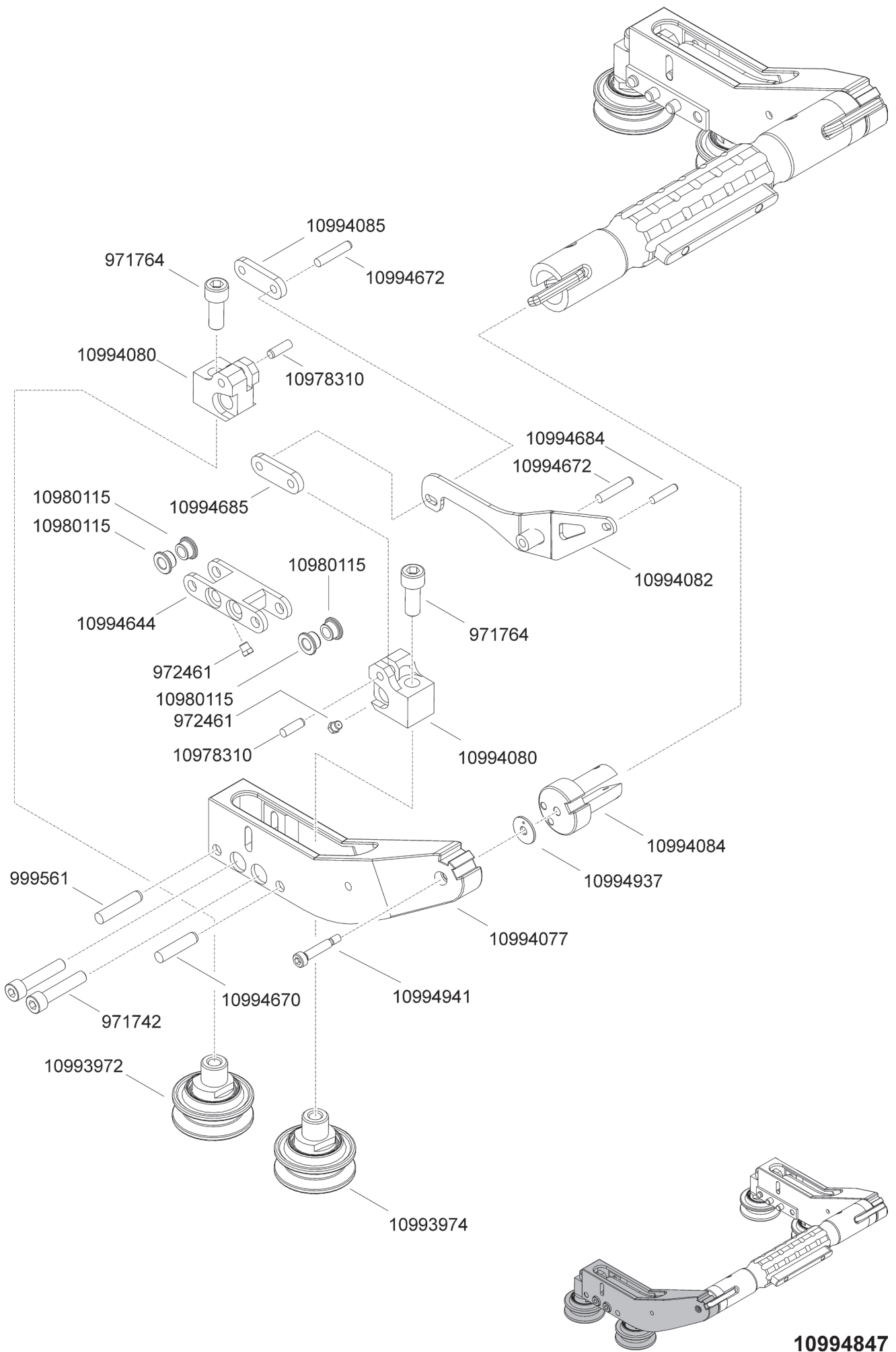


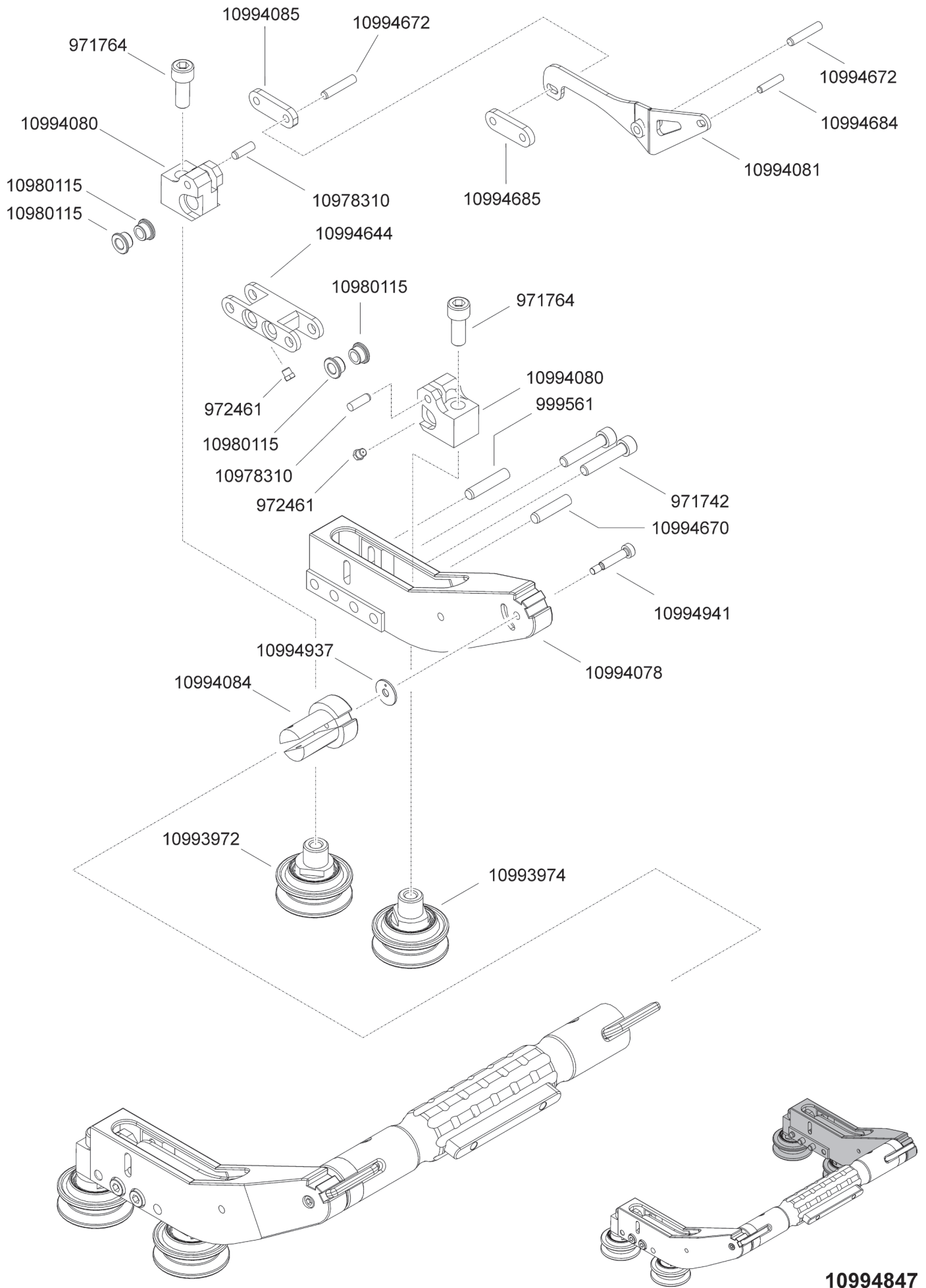


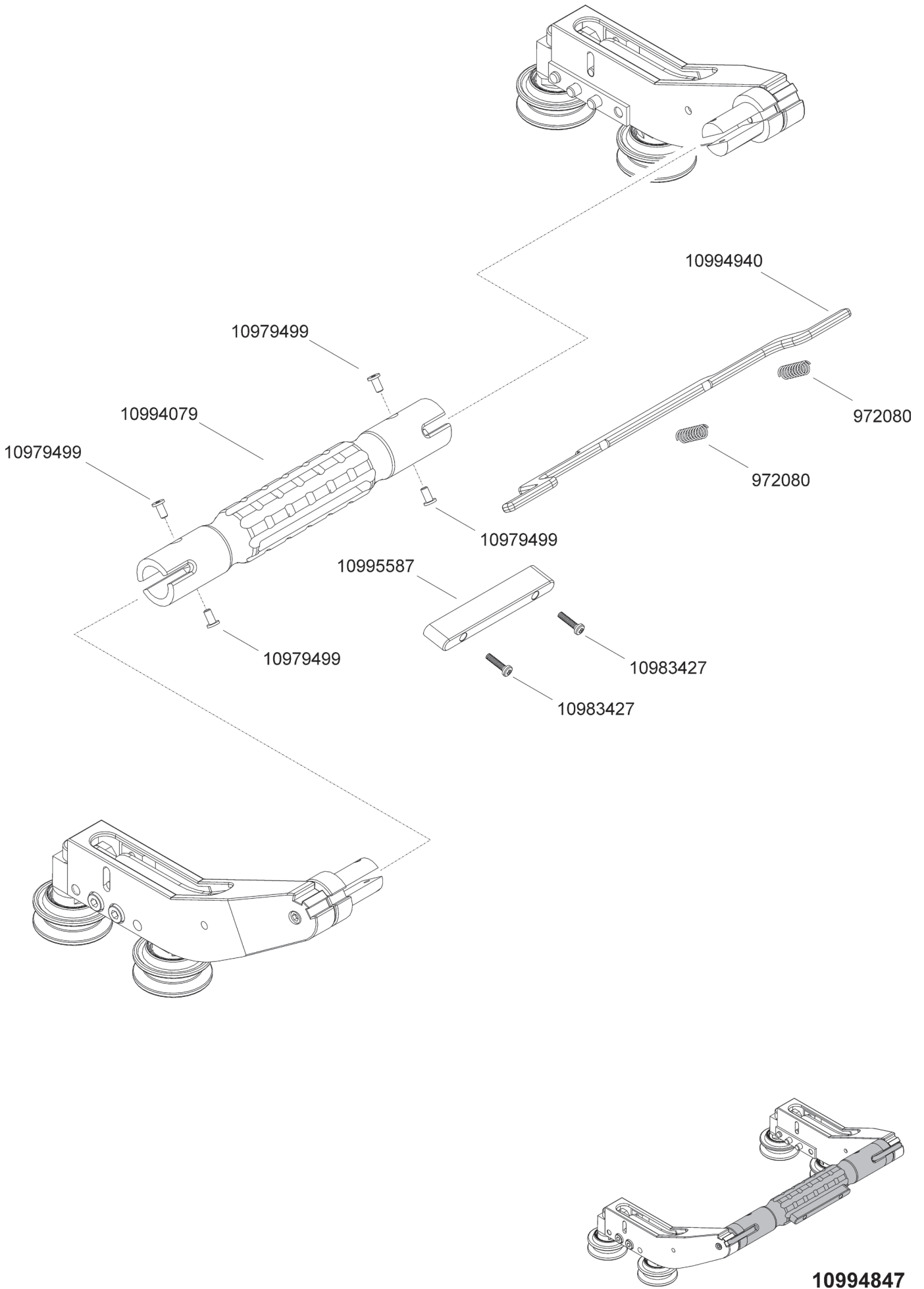




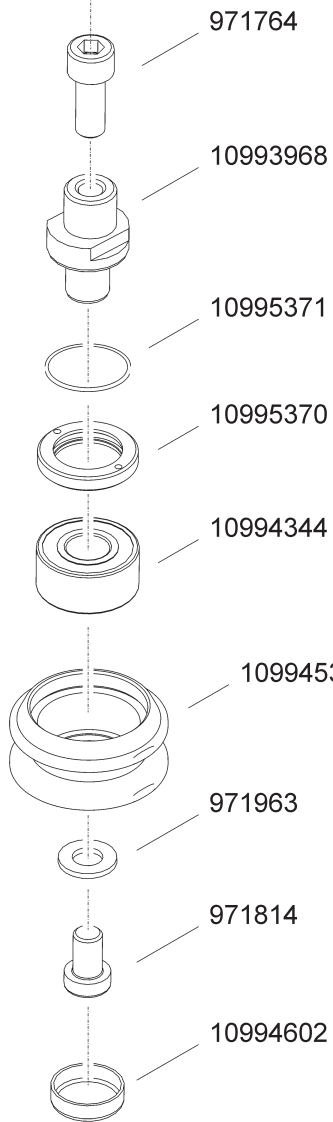
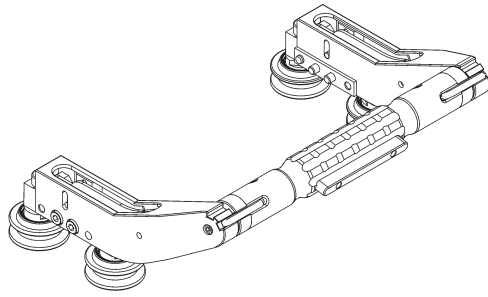
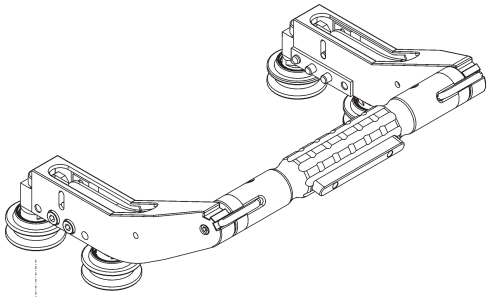




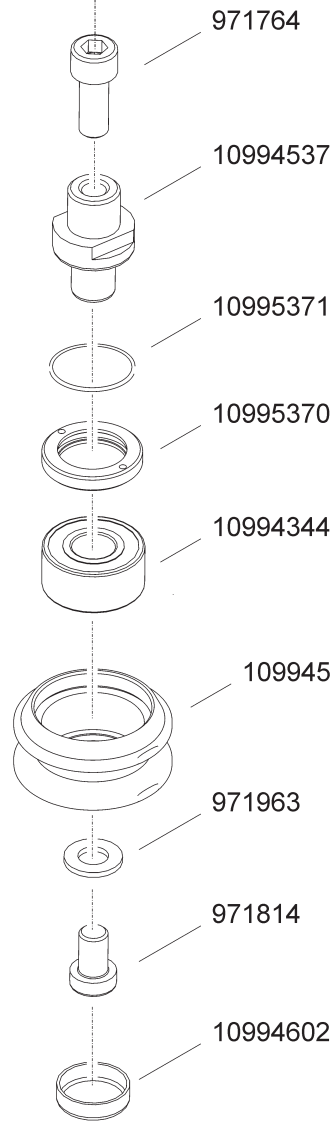




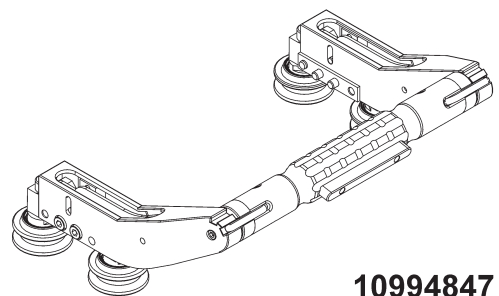
10994847



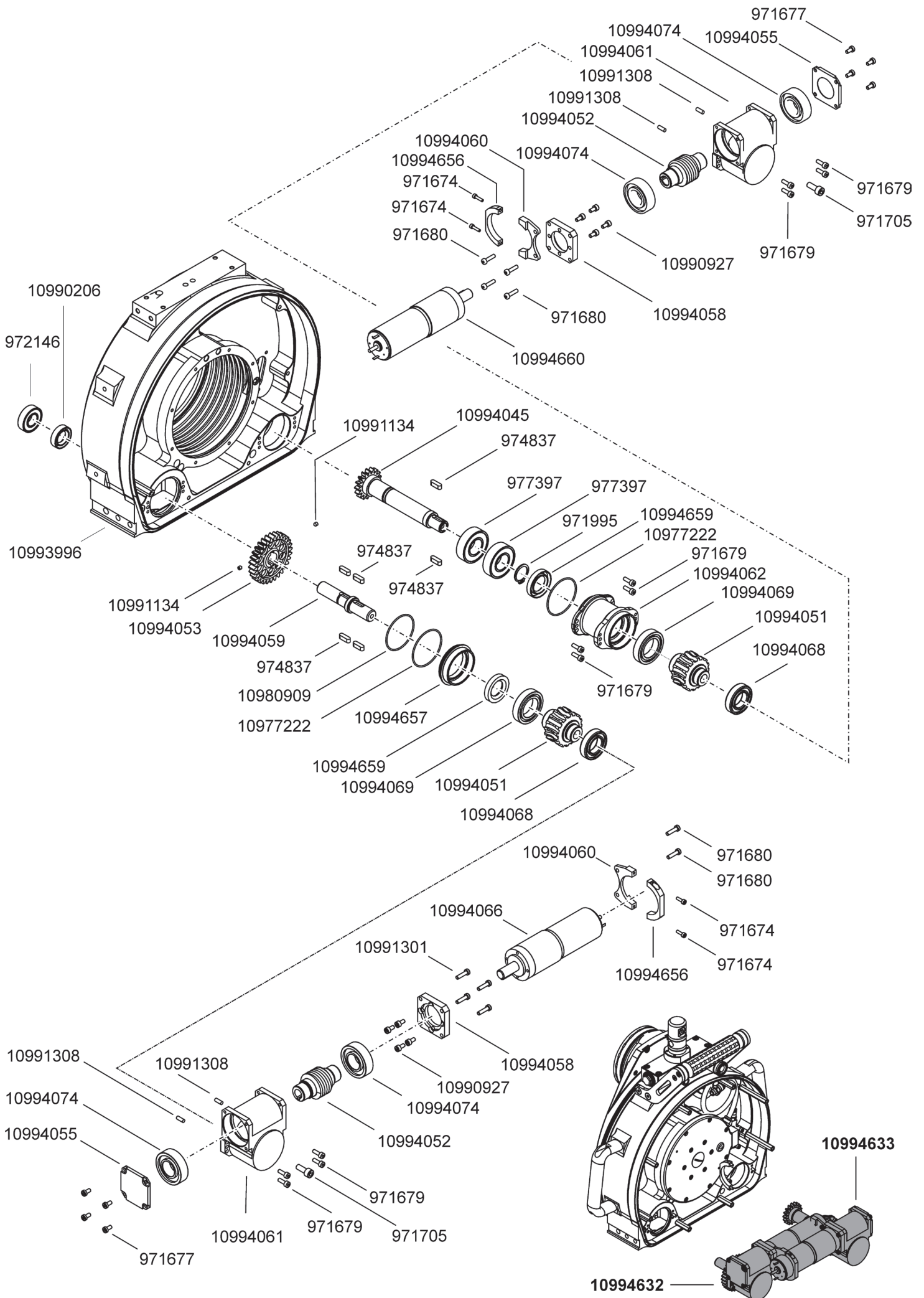
10993972

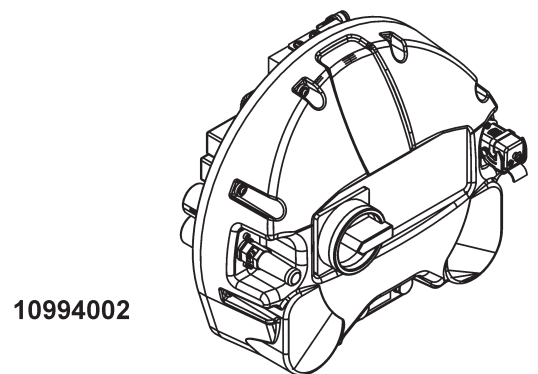
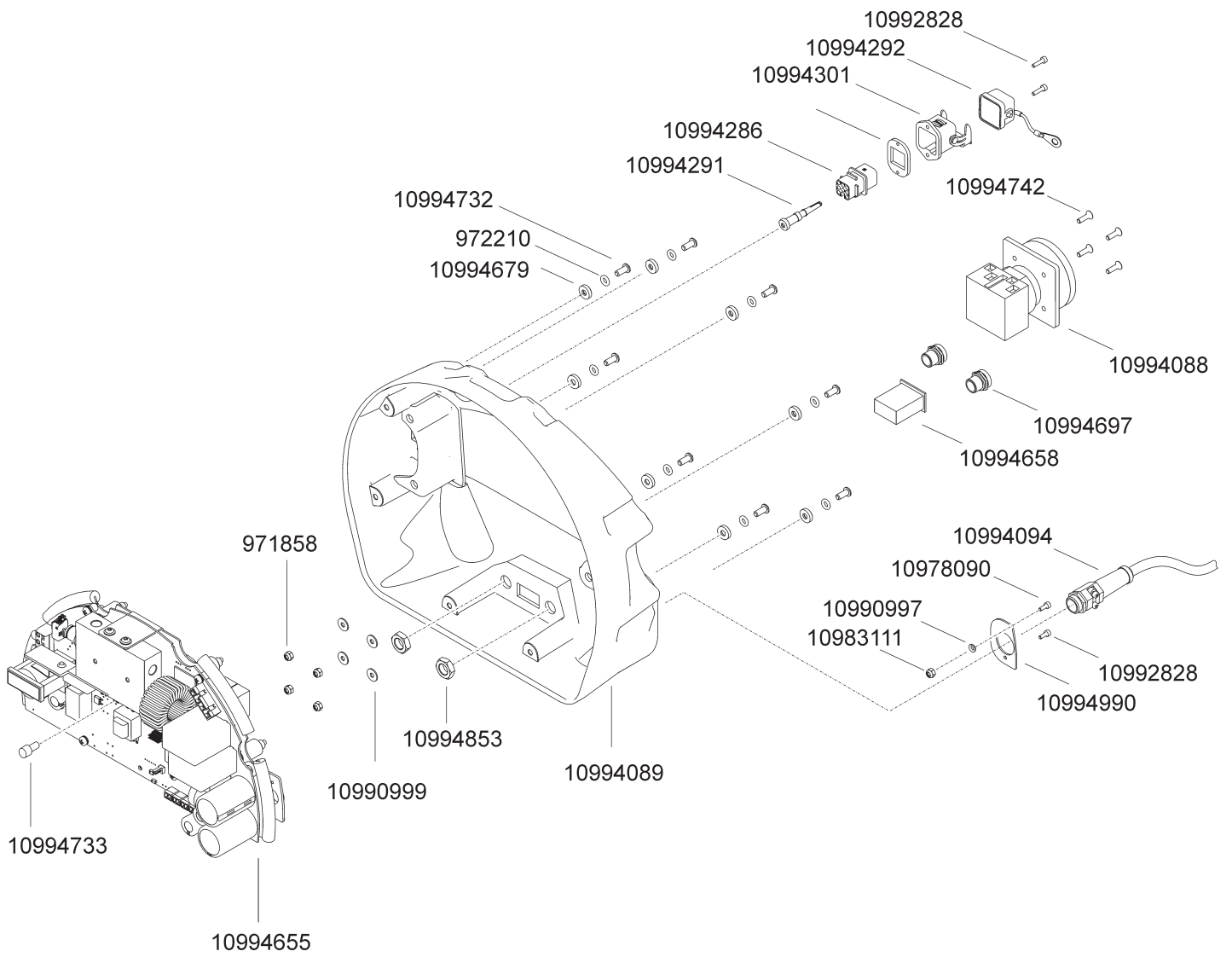


10993974



10994847





WSE811★★★

| | | | |
|--------|---------------------------|----------|---------------------------|
| 962664 | Type plate sticker | 972789 | Plug nipple 1/4" A1-WRO13 |
| 964743 | O-ring 24.00x3.50 N 70 | 974837 | Shaft key 5x5x16 |
| 964789 | O-ring 290.00x2.50 N 70 | 975924 | TY-HS type plate 80x30 |
| 965800 | Countersunk screw M4x6 | 975936 | Socket screw flhd M3x6 |
| 966100 | O-ring 8.00x2.00 N 70 | 976437 | O-ring 6.00x2.00 N 70 |
| 971627 | Spring washer M5 DIN 127A | 977397 | Gr. ball bear. 6004-2RS |
| 971635 | Threaded pin M8x8 | 977509 | MEGU seal 5.7/9.0x1.00 |
| 971674 | Socket screw M3x10 | 979275 | Socket screw M5x25 |
| 971677 | Socket screw M4x8 | 979292 | Socket screw flhd M8x12 |
| 971679 | Socket screw M4x12 | 979353 | Washer M8 |
| 971680 | Socket screw M4x16 | 979374 | Grooved nail 4x6 |
| 971683 | Socket screw M4x30 | 979505 | Gr. ball bear. 3007-2RS |
| 971684 | Socket screw M4x35 | 979536 | O-ring 20.00x2.00 N 70 |
| 971686 | Socket screw M5x6 | 979542 | O-ring 25.12x1.78 N 70 |
| 971691 | Socket screw M5x16 | 999561 | Straight pin 8h6 x 40 |
| 971695 | Socket screw M5x30 | 999791 | MEGU seal 4.5/7.0x1.00 |
| 971705 | Socket screw M6x16 | 10977222 | O-ring 46.00x1.50 N 70 |
| 971711 | Socket screw M6x25 | 10978090 | Socket screw M3x16 |
| 971742 | Socket screw M8x40 | 10978310 | Straight pin 6h6 x 20 |
| 971764 | Socket screw M10x25 | 10978402 | Blade cover EX |
| 971814 | Socket screw flhd M10x16 | 10978653 | Countersunk screw M5x10 |
| 971816 | Countersunk screw M4x10 | 10978654 | Countersunk screw M8x12 |
| 971822 | Countersunk screw M6x16 | 10979011 | Gear oil Klüber GEM4-150N |
| 971832 | All.screw extr.flhd M4x6 | 10979092 | Straight pin 4m6 x 16 |
| 971833 | All.screw extr.flhd M4x8 | 10979127 | Sticker TY-HS Gr.1 silver |
| 971858 | Lock nut M4 thin head | 10979129 | Sticker TYHS size 3 silv. |
| 971861 | Lock nut M8 thin head | 10979471 | Coupling LP-006-0-WR013 |
| 971915 | Hex. screw M12x25 | 10979499 | All.screw extr.flhd M5x10 |
| 971963 | Washer M10 10.5/20/2 | 10979735 | Hose nip. LP-006-1-SL01 |
| 971995 | Circlip shaft dia 20 | 10980115 | Fl. bear bush BP25 8/12x8 |
| 971998 | Circlip shaft dia 30 | 10980186 | O-ring 80.00x1.50 N 70 |
| 972053 | Straight pin 4m6 x 12 | 10980806 | Straight pin 3m6 x 12 |
| 972080 | Pr. spring 6.3/0.8x23 | 10980909 | O-ring 44.00x1.50 N 70 |
| 972146 | Gr. ball bear. 6002-2RS | 10981188 | Turning knob |
| 972186 | Copper seal G1/4 | 10981227 | Coiled spring pin 4x12 |
| 972203 | MEGU seal 7.3/10.2x1.00 | 10981284 | Socket screw flhd M6x35 |
| 972209 | O-ring 4.00x1.50 N 70 | 10981678 | Socket screw flhd M5x10 |
| 972210 | O-ring 5.00x2.50 N 70 | 10982267 | O-ring 135.00x2.50 N 70 |
| 972213 | O-ring 7.00x2.50 N 70 | 10982667 | Blow pump |
| 972224 | O-ring 12.00x4.00 N 70 | 10983111 | Lock nut M3 thin head |
| 972461 | Grease nipple D1 M6 | 10983427 | PT-screw K30x12 lens A2 |
| 972787 | Water coup. fem.SL013 n-r | 10984052 | Straight pin 6m6 x 12 |

WSE811★★★

| | | | |
|----------|---------------------------|----------|---------------------------|
| 10985250 | Bow-t. handle EL 725.1 PP | 10994037 | Flange |
| 10987544 | Flat sealing to Y-filter | 10994038 | Gear ring z110 |
| 10990206 | Sh.seal A 15/28/7 FKM RF | 10994039 | Hub gear z79 |
| 10990208 | O-ring 48.00x2.00 N 70 | 10994041 | Pressure ring |
| 10990771 | Spacer disc dia 45 | 10994042 | Sliding ring |
| 10990846 | O-ring 140.00x2.50 N 70 | 10994043 | Shaft protection sleeve |
| 10990879 | Gr. ball bear. 6006-2Z C4 | 10994044 | Intermediate gear z67 |
| 10990902 | O-ring 54.00x2.00 N 70 | 10994045 | Swivelling pinion z17 |
| 10990916 | Socket screw flhd M4x6 | 10994046 | Tensioning ring |
| 10990927 | Socket screw flhd M4x8 | 10994047 | Lip seal profile EPDM |
| 10990997 | Corrug. washer M3 | 10994048 | Uptake mandrel |
| 10990999 | Washer dia 4.3/12/1.0 | 10994049 | Blade centring |
| 10991134 | Threaded pin M4x5 | 10994050 | Arm cover |
| 10991282 | Filter element 250µm | 10994051 | Worm wheel |
| 10991301 | Socket screw flhd M4x16 | 10994052 | Worm gear |
| 10991308 | Staight pin 4h6 x 12 | 10994053 | Drive pinion z30 |
| 10991433 | Drain plug M25x1.5 | 10994054 | Bearing support |
| 10991653 | Cable sleeve 12x16x3 DA | 10994055 | Bearing cover |
| 10991746 | Water valve elect. on/off | 10994057 | Water connection block |
| 10992288 | Plug screw GN749 G1/8A | 10994058 | Flange PLG42 |
| 10992642 | Safety instr. label 80x17 | 10994059 | Drive shaft |
| 10992828 | Socket screw M3x12 | 10994060 | Torque support |
| 10992961 | O-ring 160.00x2.00 N 70 | 10994061 | Drive gear housing |
| 10993968 | Excentric hub | 10994062 | Spacer housing |
| 10993972 | Excen. roller assy WSE811 | 10994063 | Rotary valve |
| 10993974 | Guide roller assy WSE811 | 10994066 | Motor/gearbox 150W i=26 |
| 10993982 | El. mot. 400V/50Hz WSE811 | 10994068 | Grooved ball bearing 6904 |
| 10993983 | Rotor pinion | 10994069 | Grooved ball bearing 6905 |
| 10993984 | Clutch disc | 10994070 | Disc spring Ø10/5.2x0.5 |
| 10993985 | Pressure disc shaft | 10994071 | Grooved ball bear. 16006 |
| 10993986 | Clutch disc | 10994073 | Four point bearing 74064A |
| 10993987 | O-ring 12.00x1.50 N 70 | 10994074 | Angular ball bearing 7004 |
| 10993988 | O-ring 26.00x1.50 N 70 | 10994077 | Support lft |
| 10993993 | Sealing ring | 10994078 | Support rgt |
| 10993995 | Swivel ring | 10994079 | Handle |
| 10993996 | Support WSE811 | 10994080 | Roller support |
| 10994000 | Wall saw WSE811 assy | 10994081 | Lever rgt |
| 10994001 | Saw head WSE811 | 10994082 | Lever lft |
| 10994002 | El. control unit WSE811 | 10994084 | Sleeve |
| 10994033 | B flange | 10994085 | Knee lever P |
| 10994034 | Outer ring | 10994088 | Main switch 16A 3-term. |
| 10994035 | Positioning ring | 10994089 | Cover hood WSE811 |

WSE811 ★★★

| | | | |
|----------|---------------------------|----------|---------------------------|
| 10994094 | Mains cable assy | 10994659 | Sh.seal A 20/35/6 NBR RF |
| 10994208 | Circlip shaft dia 34 | 10994660 | Motor/gearbox 150W i=19 |
| 10994292 | Cover cap | 10994662 | Distance piece M5x30 |
| 10994301 | Addition case | 10994670 | Straight pin 8h6 x 36 |
| 10994344 | Ang. ball bear. 3202-2RS | 10994672 | Straight pin 6h6 x 32 |
| 10994521 | Cover to Y-filter | 10994677 | Remote ctr WSE811 assy |
| 10994537 | Hub | 10994679 | Screw collar M5 |
| 10994538 | Guide roller | 10994684 | Straight pin 5h6 x 24 |
| 10994580 | Housing assy | 10994685 | Knee lever |
| 10994585 | PT screw K40x20 counters. | 10994697 | Pressure balance elem M12 |
| 10994586 | Handle | 10994727 | Distance piece M5x60 |
| 10994587 | Handle holder lft | 10994732 | Lenshead screw Tx M5x12 |
| 10994588 | Handle holder rgt | 10994733 | Bump stop Ø15x15 M4 |
| 10994590 | Handle assy | 10994742 | Countersunk screw M4x14 |
| 10994592 | Threaded pin M5x8 | 10994847 | Rail guide assy |
| 10994595 | Blade guard holder assy | 10994853 | Counter nut M12x1,5 plast |
| 10994597 | Centring sealing | 10994911 | Threaded pin M3x5 |
| 10994598 | Pin | 10994912 | Straight pin 4h6 x 12 |
| 10994602 | End cover Ø25x8 | 10994930 | Shim ring dia 30/42x1.0 |
| 10994613 | Brake disc | 10994931 | Protection ring |
| 10994616 | Spacer ring 22/23.8x4 | 10994937 | Stop disc WTM-0620-015 |
| 10994617 | Pressure disc | 10994938 | Serr. washer M5 DIN6798A |
| 10994618 | Overload clutch assy | 10994940 | Lever |
| 10994619 | Disc spring Ø18/8.2x1.0 | 10994941 | Shoulder screw 6x25/M5 |
| 10994620 | Sh.seal A 85/100/9 NBR RF | 10994990 | Opposite plate cable |
| 10994621 | Sh.seal A 16/24/5 NBR RF | 10994992 | Sh.seal AS35/52/6 FPM |
| 10994631 | Swivel arm assy | 10995086 | Fork wrench AF22 4mm |
| 10994632 | Feed motor assy drive | 10995310 | Sealing cap |
| 10994633 | Feed motor assy swivel | 10995370 | Threaded ring |
| 10994634 | Water valve housing | 10995371 | O-ring 28x2.50 N 70 |
| 10994636 | Elbow union 1/8" Ø8 | 10995395 | Dehumidification bag |
| 10994639 | Hose no. 1007 | 10995432 | O-ring 302x4 CR foam |
| 10994640 | Hose no. 1008 | 10995587 | End stop |
| 10994641 | Hose no. 1009 | 10995590 | Box |
| 10994642 | Water connection piece | 10996148 | Socket screw M5x6 |
| 10994644 | Bearing support | 10996189 | O-ring 310x2.00 N 70 |
| 10994647 | Rotor assy | | |
| 10994648 | Stator assy | | |
| 10994655 | Control unit WSE811 | | |
| 10994656 | Bracket top | | |
| 10994657 | Bearing support | | |
| 10994658 | Op. hours count 4.5-35VDC | | |

NOTES